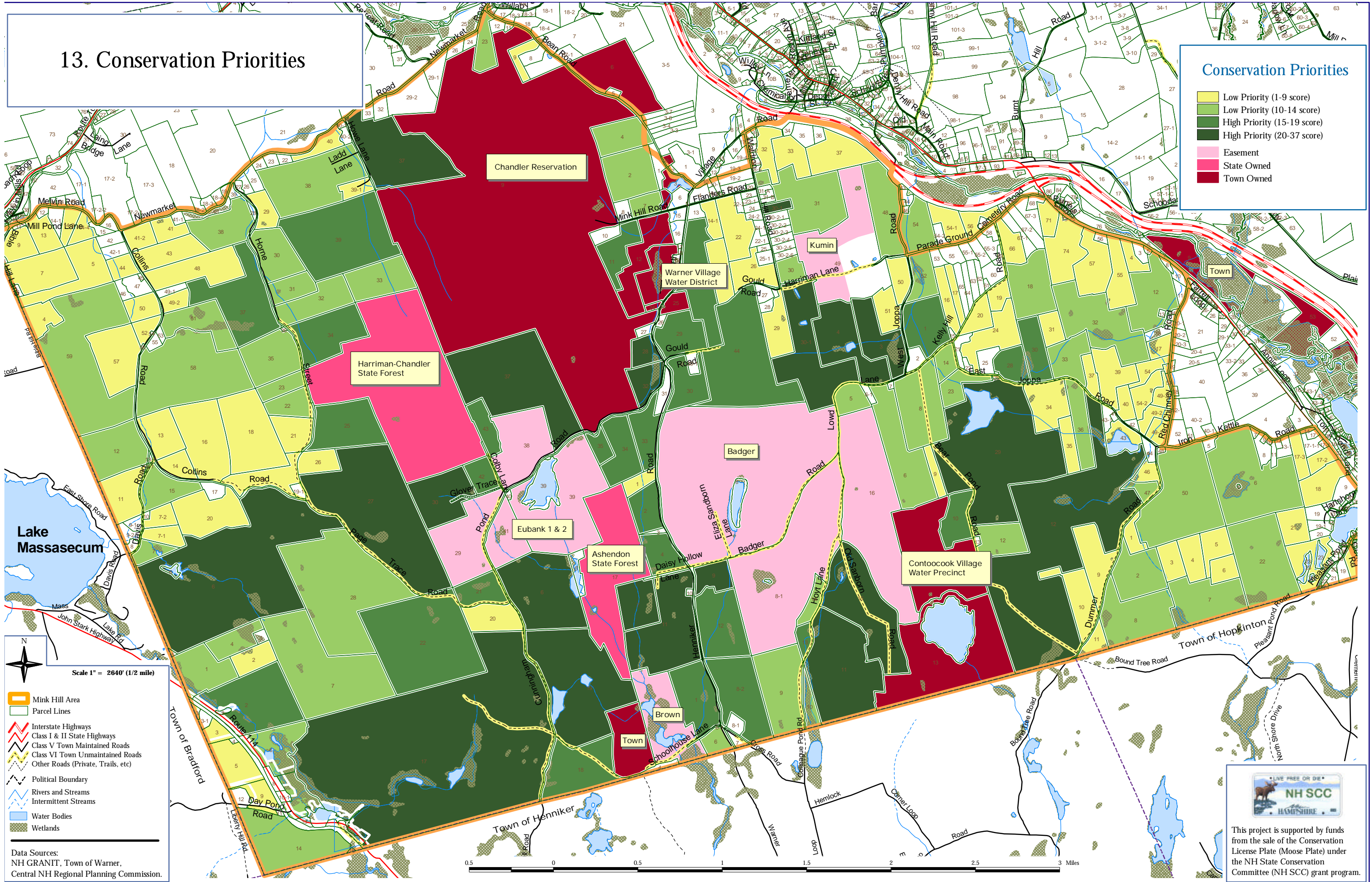


13. Conservation Priorities

Conservation Priorities

- Low Priority (1-9 score)
- Low Priority (10-14 score)
- High Priority (15-19 score)
- High Priority (20-37 score)
- Easement
- State Owned
- Town Owned



Lake Massasecum

Scale 1" = 2640' (1/2 mile)

- Mink Hill Area
- Parcel Lines
- Interstate Highways
- Class I & II State Highways
- Class V Town Maintained Roads
- Class VI Town Unmaintained Roads
- Other Roads (Private, Trails, etc)
- Political Boundary
- Rivers and Streams
- Intermittent Streams
- Water Bodies
- Wetlands

Data Sources:
NH GRANIT, Town of Warner,
Central NH Regional Planning Commission.

0.5 0 0.5 1 1.5 2 2.5 3 Miles



This project is supported by funds from the sale of the Conservation License Plate (Moose Plate) under the NH State Conservation Committee (NH SCC) grant program.