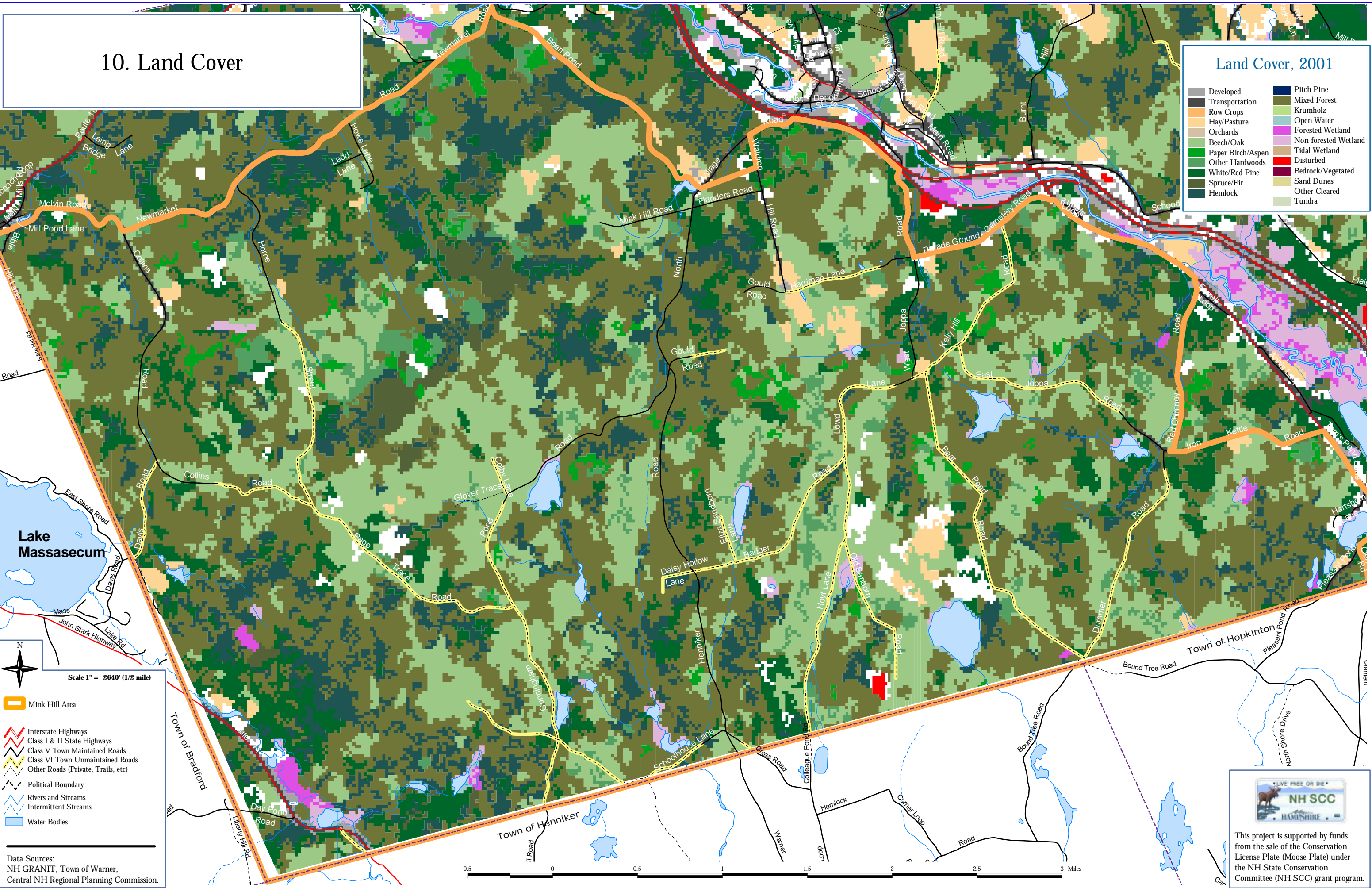


# 10. Land Cover

## Land Cover, 2001

- |                   |                      |
|-------------------|----------------------|
| Developed         | Pitch Pine           |
| Transportation    | Mixed Forest         |
| Row Crops         | Krumholz             |
| Hay/Pasture       | Open Water           |
| Orchards          | Forested Wetland     |
| Beech/Oak         | Non-forested Wetland |
| Paper Birch/Aspen | Tidal Wetland        |
| Other Hardwoods   | Disturbed            |
| White/Red Pine    | Bedrock/Vegetated    |
| Spruce/Fir        | Sand Dunes           |
| Hemlock           | Other Cleared        |
|                   | Tundra               |



**Scale 1" = 2640' (1/2 mile)**

**Legend:**

- Mink Hill Area
- Interstate Highways
- Class I & II State Highways
- Class V Town Maintained Roads
- Class VI Town Unmaintained Roads
- Other Roads (Private, Trails, etc)
- Political Boundary
- Rivers and Streams
- Intermittent Streams
- Water Bodies

**Data Sources:**  
 NH GRANIT, Town of Warner,  
 Central NH Regional Planning Commission.



This project is supported by funds from the sale of the Conservation License Plate (Moose Plate) under the NH State Conservation Committee (NH SCC) grant program.