

Final Draft
Town of Warner
 New Hampshire



Scenic Resources

Legend

- populated place
 - cemetery
 - summit or ridge
 - Warner
 - Neighboring Towns
 - Conservation Lands
 - Interstate
 - State
 - Local
 - Class 5
 - Class 5 Seasonal
 - Class 6
 - Lake/Pond/Reservoir
 - River
 - Perennial Stream
 - Intermittent Stream
- Scenic Value**
- Scenic Feature
 - View Azimuth
 - Open Land
 - Scenic Road
- Value**
- High : 118.02
 Low : 0

Viewpoints

| ID | Bearing | Value | ID | Bearing | Value |
|----|---------|-------|-----|------------|-------|
| 43 | 90-210 | 3.03 | 94 | 210-380 | 4.1 |
| 44 | 270-30 | 3.78 | 95 | 340-90 | 3.95 |
| 45 | 0-80 | 3.88 | 96 | 0-90 | 3.53 |
| 46 | 300-330 | 3.15 | 97 | 30-60 | 3.38 |
| 47 | 0-80 | 2.53 | 98 | 200-240 | 3.45 |
| 48 | 260-330 | 2.63 | 99 | 300-320 | 3.1 |
| 49 | 30-120 | 3.6 | 100 | 300-320??? | 3.33 |
| 50 | 150-220 | 3.73 | 101 | 40-60 | 2.53 |
| 52 | 180-270 | 3.73 | 102 | 230-330 | 3.63 |
| 53 | 0-80 | 2.46 | 103 | 210-330 | 3.63 |
| 54 | 60-120 | 3.23 | 104 | 250-290 | 3.73 |
| 55 | 170-210 | 2.5 | 105 | 240-0 | 4.18 |
| 56 | 300-40 | 2.48 | 106 | 20-80 | 4.38 |
| 57 | 150-270 | 2.6 | 107 | 360 | 4.8 |
| 59 | 120-230 | 3.3 | 108 | 360 | 4.8 |
| 60 | 120-180 | 3.43 | 109 | 150-0 | 4.6 |
| 61 | 120-240 | 3.45 | 110 | 250-0 | 3.98 |
| 62 | 210-260 | 3.73 | 111 | 290-45 | 3.18 |
| 63 | 210-300 | 3 | 112 | 230-310 | 3.23 |
| 64 | 80-110 | 3.8 | 113 | 350-60 | 4.03 |
| 67 | 160-270 | 3.85 | 114 | 0-130 | 4.13 |
| 68 | 30-120 | 3.38 | 115 | 310-30 | 3.78 |
| 69 | 240-330 | 4.18 | 116 | 30-170 | 3.9 |
| 70 | 210-320 | 3.7 | 117 | 210-340 | 3.93 |
| 71 | 130-230 | 3.2 | 118 | 140-200 | 3 |
| 72 | 180-270 | 3.13 | 119 | 110-180 | 3.55 |
| 73 | 80-100 | 3.73 | 120 | 310-240 | 2.78 |
| 74 | 130-200 | 3.5 | 121 | 100-140 | 3.28 |
| 75 | 210-310 | 2.78 | 122 | 310-350 | 2.78 |
| 76 | 280-340 | 2.43 | 123 | 240-320 | 3.23 |
| 77 | 280-350 | 3.35 | 124 | 160-340 | 3.48 |
| 79 | 90-200 | 2.58 | 125 | 180-0 | 2.78 |
| 80 | 240-290 | 3.6 | 126 | 290-320 | 3.23 |
| 81 | 140-230 | 3.45 | 127 | 280-20 | 3.23 |
| 82 | 230-250 | 3.3 | 128 | 80-200 | 3.68 |
| 83 | 45-200 | 3.98 | 129 | 40-310 | 3.15 |
| 84 | 330-120 | 4.08 | 130 | 230-330 | 3.85 |
| 85 | 180-300 | 4 | 131 | 300-60 | 1 |
| 86 | 170-270 | 3.8 | 132 | 300-60 | 3 |
| 87 | 150-250 | 3.7 | 133 | 360 | 4.5 |
| 88 | 280-330 | 3.86 | 134 | 360 | 4.5 |
| 89 | 150-220 | 4.05 | 135 | 360 | 4.5 |
| 90 | 210-330 | 3.58 | 136 | 360 | 4.5 |
| 91 | 240-340 | 3.33 | 137 | 360 | 4.5 |
| 92 | 210-330 | 3.63 | 138 | 360 | 4.5 |
| 93 | 210-360 | 3.88 | | | |

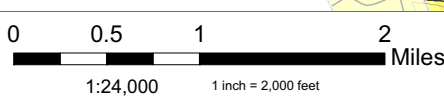
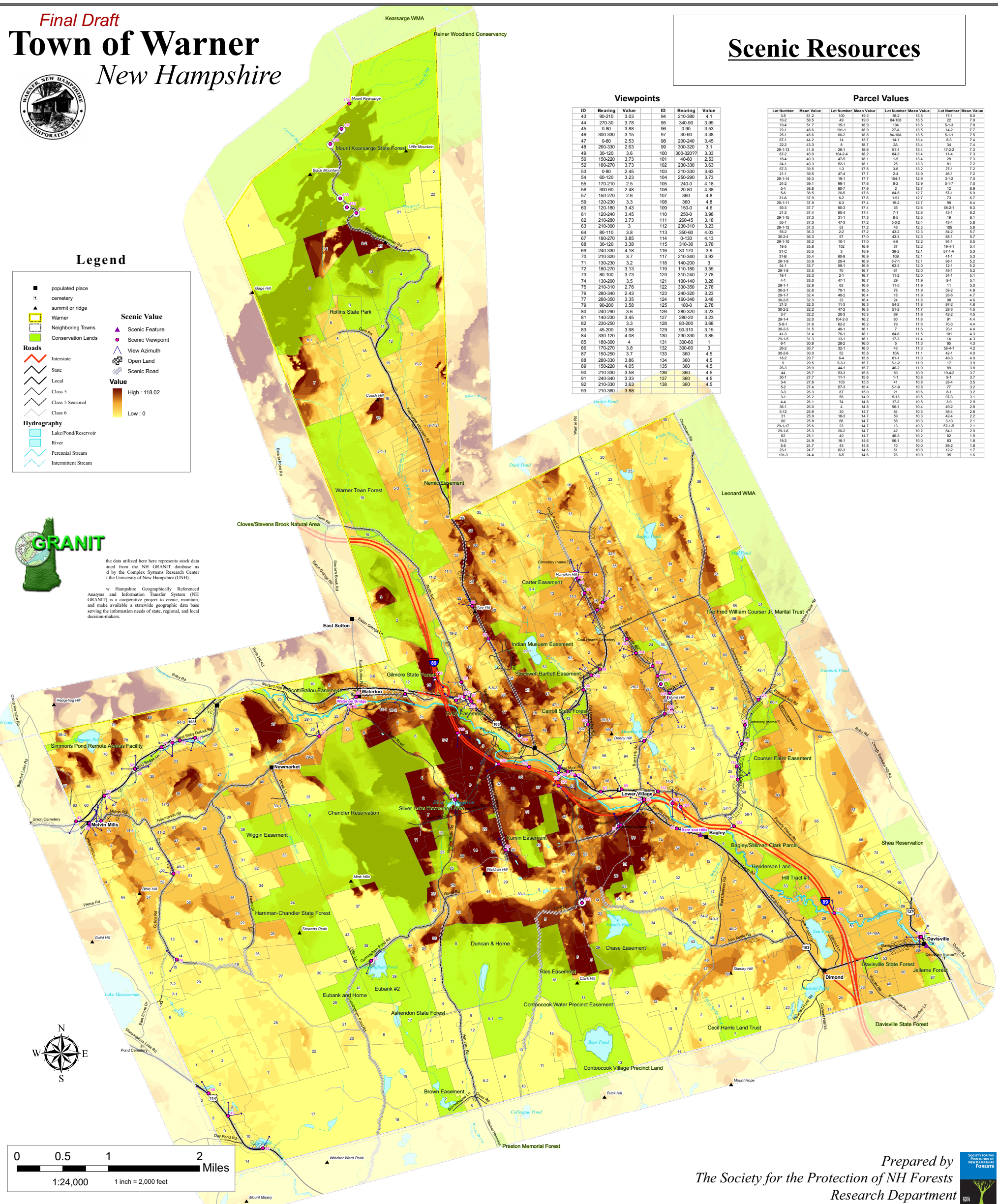
Parcel Values

| Lot Number | Mean Value | Lot Number | Mean Value | Lot Number | Mean Value | Lot Number | Mean Value |
|------------|------------|------------|------------|------------|------------|------------|------------|
| 3-6 | 61.2 | 100 | 19.3 | 162 | 13.5 | 171 | 8.0 |
| 3-9 | 26.5 | 85 | 19.5 | 84-100 | 13.5 | 22 | 7.9 |
| 194 | 61.7 | 151 | 18.9 | 104 | 13.5 | 5-13 | 7.8 |
| 221 | 48.8 | 101.1 | 18.9 | 22A | 13.5 | 15.2 | 7.7 |
| 251 | 45.8 | 60.2 | 18.8 | 84-10A | 13.5 | 5-11 | 7.5 |
| 47 | 0-80 | 14 | 18.7 | 14.1 | 13.4 | 8.3 | 7.4 |
| 48 | 260-330 | 2.63 | 8 | 18.7 | 2A | 13.4 | 8.3 |
| 49 | 30-120 | 3.6 | 100 | 300-320??? | 3.33 | 13.4 | 7.4 |
| 50 | 150-220 | 3.73 | 101 | 40-60 | 2.53 | 13.4 | 7.4 |
| 52 | 180-270 | 3.73 | 102 | 230-330 | 3.63 | 13.4 | 7.4 |
| 53 | 0-80 | 2.46 | 103 | 210-330 | 3.63 | 13.4 | 7.4 |
| 54 | 60-120 | 3.23 | 104 | 250-290 | 3.73 | 13.4 | 7.4 |
| 55 | 170-210 | 2.5 | 105 | 240-0 | 4.18 | 13.4 | 7.4 |
| 56 | 300-40 | 2.48 | 106 | 20-80 | 4.38 | 13.4 | 7.4 |
| 57 | 150-270 | 2.6 | 107 | 360 | 4.8 | 13.4 | 7.4 |
| 59 | 120-230 | 3.3 | 108 | 360 | 4.8 | 13.4 | 7.4 |
| 60 | 120-180 | 3.43 | 109 | 150-0 | 4.6 | 13.4 | 7.4 |
| 61 | 120-240 | 3.45 | 110 | 250-0 | 3.98 | 13.4 | 7.4 |
| 62 | 210-260 | 3.73 | 111 | 290-45 | 3.18 | 13.4 | 7.4 |
| 63 | 210-300 | 3 | 112 | 230-310 | 3.23 | 13.4 | 7.4 |
| 64 | 80-110 | 3.8 | 113 | 350-60 | 4.03 | 13.4 | 7.4 |
| 67 | 160-270 | 3.85 | 114 | 0-130 | 4.13 | 13.4 | 7.4 |
| 68 | 30-120 | 3.38 | 115 | 310-30 | 3.78 | 13.4 | 7.4 |
| 69 | 240-330 | 4.18 | 116 | 30-170 | 3.9 | 13.4 | 7.4 |
| 70 | 210-320 | 3.7 | 117 | 210-340 | 3.93 | 13.4 | 7.4 |
| 71 | 130-230 | 3.2 | 118 | 140-200 | 3 | 13.4 | 7.4 |
| 72 | 180-270 | 3.13 | 119 | 110-180 | 3.55 | 13.4 | 7.4 |
| 73 | 80-100 | 3.73 | 120 | 310-240 | 2.78 | 13.4 | 7.4 |
| 74 | 130-200 | 3.5 | 121 | 100-140 | 3.28 | 13.4 | 7.4 |
| 75 | 210-310 | 2.78 | 122 | 310-350 | 2.78 | 13.4 | 7.4 |
| 76 | 280-340 | 2.43 | 123 | 240-320 | 3.23 | 13.4 | 7.4 |
| 77 | 280-350 | 3.35 | 124 | 160-340 | 3.48 | 13.4 | 7.4 |
| 79 | 90-200 | 2.58 | 125 | 180-0 | 2.78 | 13.4 | 7.4 |
| 80 | 240-290 | 3.6 | 126 | 290-320 | 3.23 | 13.4 | 7.4 |
| 81 | 140-230 | 3.45 | 127 | 280-20 | 3.23 | 13.4 | 7.4 |
| 82 | 230-250 | 3.3 | 128 | 80-200 | 3.68 | 13.4 | 7.4 |
| 83 | 45-200 | 3.98 | 129 | 40-310 | 3.15 | 13.4 | 7.4 |
| 84 | 330-120 | 4.08 | 130 | 230-330 | 3.85 | 13.4 | 7.4 |
| 85 | 180-300 | 4 | 131 | 300-60 | 1 | 13.4 | 7.4 |
| 86 | 170-270 | 3.8 | 132 | 300-60 | 3 | 13.4 | 7.4 |
| 87 | 150-250 | 3.7 | 133 | 360 | 4.5 | 13.4 | 7.4 |
| 88 | 280-330 | 3.86 | 134 | 360 | 4.5 | 13.4 | 7.4 |
| 89 | 150-220 | 4.05 | 135 | 360 | 4.5 | 13.4 | 7.4 |
| 90 | 210-330 | 3.58 | 136 | 360 | 4.5 | 13.4 | 7.4 |
| 91 | 240-340 | 3.33 | 137 | 360 | 4.5 | 13.4 | 7.4 |
| 92 | 210-330 | 3.63 | 138 | 360 | 4.5 | 13.4 | 7.4 |
| 93 | 210-360 | 3.88 | | | | 13.4 | 7.4 |



the data utilized here represents stock data used from the NH GRANIT database as of the Complex Systems Research Center at the University of New Hampshire (UNH).

New Hampshire Geographically Referenced Analysis and Information Transfer System (NH GRANIT) is a cooperative project to create, maintain, and make available a statewide geographic data base serving the information needs of state, regional, and local decision-makers.



Prepared by
 The Society for the Protection of NH Forests
 Research Department