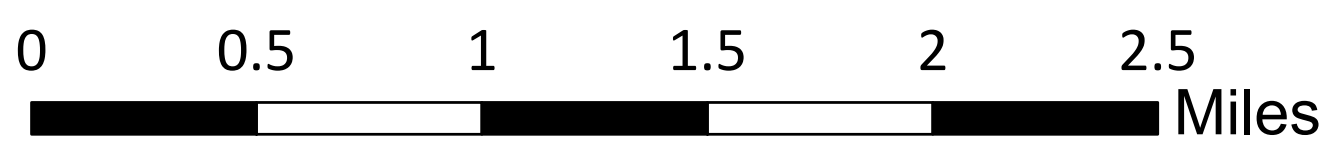
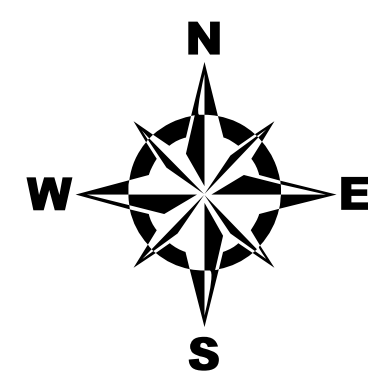


TOWN OF WARNER NEW HAMPSHIRE Hazard Mitigation Plan 2019 Map 5: Culverts and Stream Crossings

Legend

- Dams
- Watershed Boundaries
- Past Flood Damage
- Floodplains**
- 1% Annual Flood Risk
- 0.2% Annual Flood Risk
- Wetlands
- Lakes and Ponds
- Rivers and Streams
- Intermittent Streams
- Topographic Contours**
- 20' Contour
- 100' Contour
- Roads**
- Interstates
- Class I and II State Highways
- Class V Town Maintained Roads
- Class VI Unmaintained Roads
- Other Roads/Private
- Rail Trail
- Town Boundary



This map was produced by the Central NH Regional Planning Commission for the Town of Warner Hazard Mitigation Plan Update, March 2019. It is intended for planning purposes only.

Funded through NH Homeland Security and Emergency Management and the Federal Emergency Management Agency.

Data Sources: NH GRANIT, NH Dept. of Environmental Services, NH Dept. of Transportation, FEMA, CNHRPC, Town of Warner, NH Fish and Game, Trout Unlimited (2-8-19 data), Hazard Mitigation Subcommittee Input. Corrections should be provided to the Town of Warner and to CNHRPC.

**Central New Hampshire
Regional Planning
Commission**

28 Commercial Street, Suite 3
Concord, NH 03301

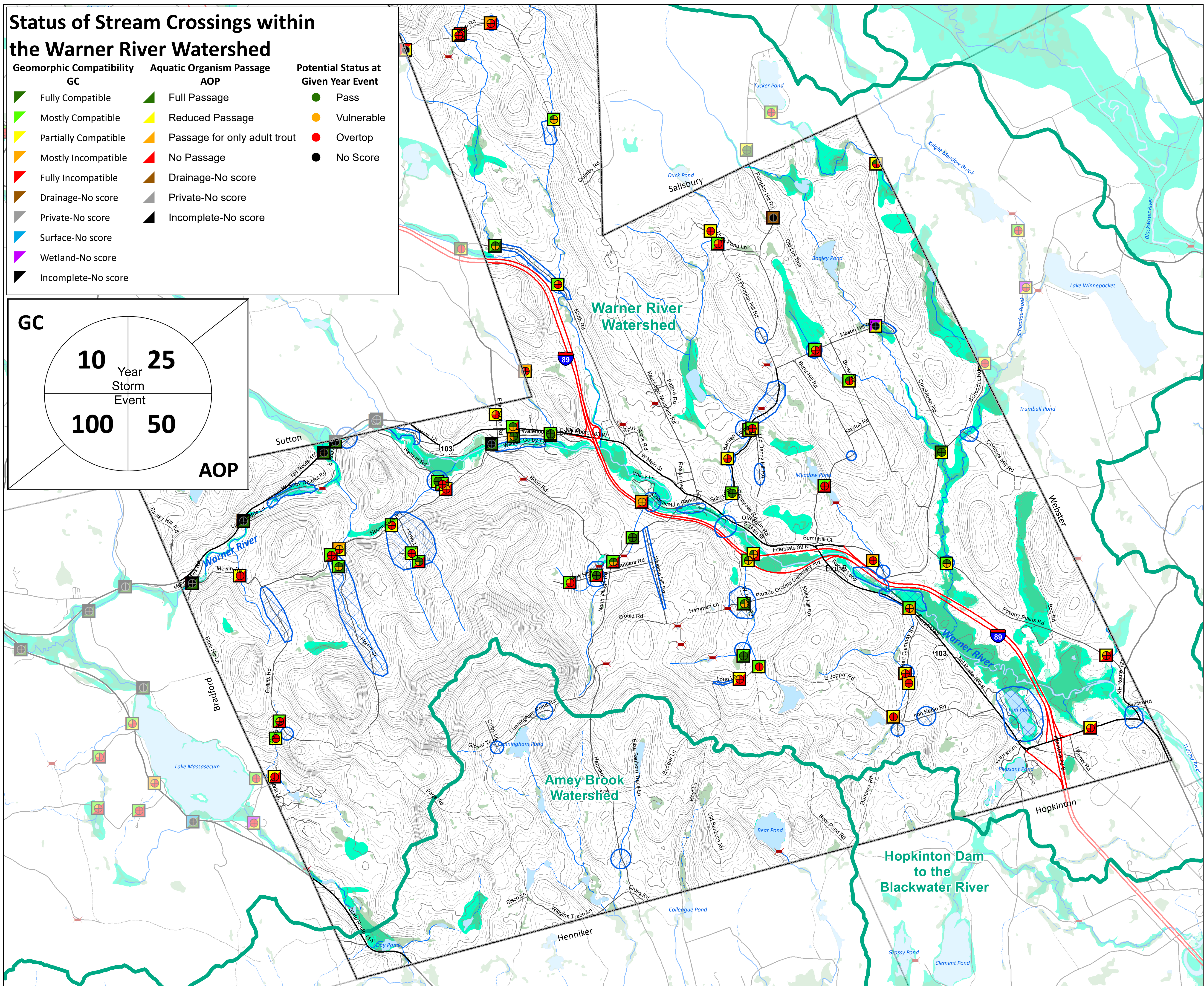
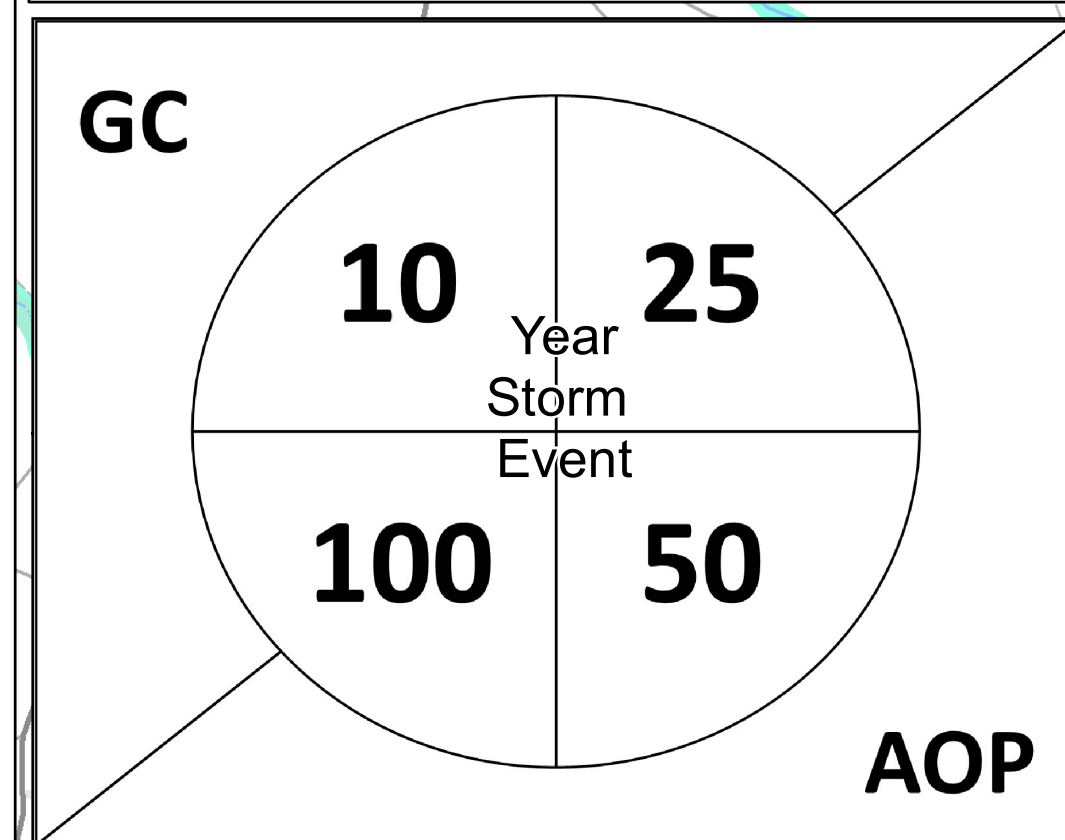
603.226.6020
www.cnhrpc.org



FEMA

Status of Stream Crossings within the Warner River Watershed

Geomorphic Compatibility GC	Aquatic Organism Passage AOP	Potential Status at Given Year Event
Fully Compatible	Full Passage	Pass
Mostly Compatible	Reduced Passage	Vulnerable
Partially Compatible	Passage for only adult trout	Overtop
Mostly Incompatible	No Passage	No Score
Fully Incompatible	Drainage-No score	
Drainage-No score	Private-No score	
Private-No score	Incomplete-No score	
Surface-No score		
Wetland-No score		
Incomplete-No score		



**Hopkinton Dam
to the
Blackwater River**