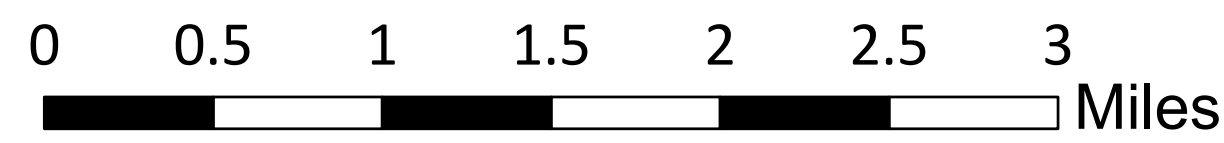
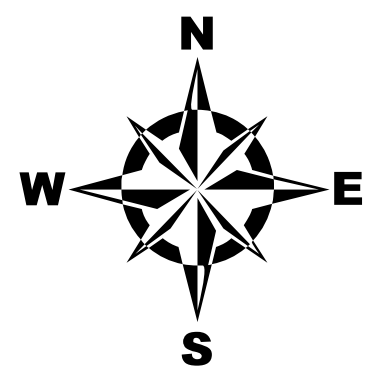


# TOWN OF WARNER NEW HAMPSHIRE Hazard Mitigation Plan 2019 Map 3: Critical and Community Facilities

## Legend

- Dams
- Bridges
- Kearsarge Mountain Rd Vulnerable Area
- Village Business Area
- Village Water District
- Floodplains**
  - 1% Annual Flood Risk formerly known as 100 Year
  - 0.2% Annual Flood Risk formerly known as 500 Year
- Lakes and Ponds
- Rivers and Streams
- Intermittent Streams
- Roads**
  - Interstates
  - Class I and II State Highways
  - Class V Town Maintained Roads
  - Class VI Unmaintained Roads
  - Other Roads/Private
  - Rail Trail
  - Town Boundary



This map was produced by the Central NH Regional Planning Commission for the Town of Warner Hazard Mitigation Plan Update, March 2019. It is intended for planning purposes only.

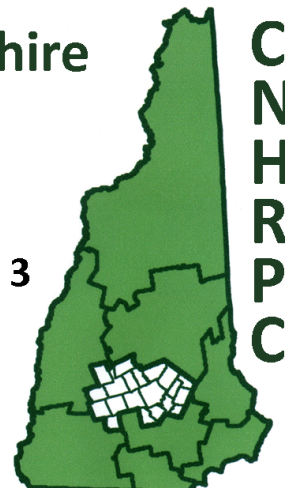
Funded through NH Homeland Security and Emergency Management and the Federal Emergency Management Agency.

Data Sources: NH GRANIT, NH Dept. of Environmental Services, NH Dept. of Transportation, FEMA, CNHRPC, Town of Warner, Hazard Mitigation Subcommittee input. Corrections should be provided to the Town of Warner and to CNHRPC.

**Central New Hampshire  
Regional Planning  
Commission**

28 Commercial Street, Suite 3  
Concord, NH 03301

603.226.6020  
www.cnhrpc.org



**FEMA**

## CRITICAL FACILITIES

### Essential Facilities

1. Fire Department
2. Fire Station (NEW)
3. Highway Department
4. NH DOT Shed - 501 CLOSED (diesel source)
5. NH DOT Shed - 526
6. Police Department
7. Town Hall
8. Transfer Station

### Utilities

9. Dry Hydrant - Mason Hill
10. Dry Hydrant - Pleasant Pond
11. Dry Hydrant - Poverty Plains
12. Dry Hydrant - Depot St/Warner River
13. Dry Hydrant - Melvin Mills/Warner River
14. Dry Hydrant - Newmarket Rd/Warner River
15. Mt Kearsarge Fire Tower
16. PSNH Sub Stations
17. Sewerage Pump Station
18. TDS Remote Station
19. TDS Remote Station
20. Sewerage Pump Station
21. TDS Remote Station
22. TDS Remote Station
23. TDS Remote Station
24. TDS Remote Station
25. TDS Remote Station
26. TDS Remote Station
27. TDS Remote Station
28. TDS Telecom
29. Telecommunications Tower - Davisville
30. Telecommunications Tower - Kelley Hill
31. Telecommunications Tower - North Rd
32. Telecommunications Tower - Route 103
33. Telecommunications Tower - Tory Hill
34. Warner Wastewater Treatment Plant
35. Water Pump Station
36. Water Storage Tank 1
37. Water Storage Tank 2
38. Well Heads (2)

### Dams

39. 243.04 Silver Pond Dam (L)
40. 243.05 Bear Pond Dam (L)
41. 243.06 Warner River Dam
42. 243.07 Warner River
43. 243.15 Swain Lowell Dam (NM)
44. 243.16 Silver Brook (NM)
45. 243.18 Silver Lake Upper Pond Dam (NM)
46. 243.19 Farm Pond (NM)
47. 243.20 Fire Pond Dam (NM)
48. 243.21 Highlands Farm Pond Dam (NM)
49. 243.23 Fire Pond Dam (NM)
50. 243.24 Recreation Pond (NM)
51. 243.25 Fire Pond (NM)
52. 243.26 Farm Pond (NM)
53. 243.27 Fire Pond (NM)
54. 243.28 Farm Pond (NM)
55. 243.29 Warner River Hydro
56. 243.30 Kearsarge Eld Housing Det Pond
57. 243.31 Burke Pond Dam (NM)
58. 243.32 Bower Stock Pond Dam (NM)

**Hazard Class: NM = Non-Menace,  
L = Low, S = Significant, H = High**

### Bridges

59. (State) 104/122 Kearsarge Mt Rd
60. (Town) 123/102 North Rd
61. (Town) 134/110 North Rd
62. (State) 144/056 NH 103
63. (State) 145/053 NH 103
64. (Town) 151/037 Laing Rd
65. (Town) 157/087 Waterloo Covered Br
66. (State) 158/099 NH 103
67. (Town) 159/075 Retreat Rd
68. (Town) 159/098 Old Town Line Rd
69. (Town) 160/022 Bible Hill Lane
70. (State) 164/103 I-89 SB
71. (State) 164/104 I-89 NB
72. (State) 164/104 I-89 NB
73. (State) 165/106 NH 103
74. (State) 166/103 I-89 SB
75. (State) 166/103 I-89 SB
76. (State) 166/104 I-89 NB
77. (Town) 175/134 Bartlett Lp
78. (Town) 177/127 Bartlett Lp
79. (Town) 181/112 Chemical Rd
80. (Town) 183/114 North Village Rd
81. (State) 184/113 I-89 NB
82. (Town) 184/125 School St
83. (State) 185/112 I-89 SB
84. (Town) 187/104 North Village Rd
85. (State) 187/122 NH 103
86. (Town) 189/094 Mink Hill Lane
87. (Town) 189/099 North Village Rd
88. (Town) 191/122 Dalton/Jobba Covered Br
89. (Town) 194/172 Connors Mill Rd
90. (State) 195/122 I-89 NB
91. (Town) 195/166 Schoodac Rd
92. (State) 196/121 I-89 SB
93. (State) 199/128 I-89 NB
94. (State) 202/136 NH 103
95. (State) 204/136 NH 103
96. (State) 206/141 I-89 SB
97. (State) 206/141 I-89 SB

### Bridges Cont

98. (Town) 216/159 Poverty Plains Rd
99. (State) 221/156 I-89 NB
100. (State) 222/156 I-89 SB
101. (State) 243/166 I-89 SB
102. (State) 244/167 I-89 NB
103. (State) 254/180 NH 127
104. (State) 255/163 I-89 SB
105. (State) 255/164 I-89 NB

## COMMUNITY FACILITIES

### Shelters, Schools, and Medical Facilities

106. Family Tree Health Center
107. Northeast Catholic College
108. Old Grade School Building
109. Pillsbury Free Library
110. Simonds Elementary School
111. Town Hall (Town Shelter)
112. Boys and Girls Club (Simonds School)
113. Brayside Apartments
114. Davisville Apartments
115. Kearsarge Mountain Estates Apartments
116. Kearsarge Mountain Estates Apartments
117. Lutheran Latvian Homes & Seasonal Camps
118. Pleasant Lake Estates Manufactured Homes
119. North Ridge Estates 55+
120. North Ridge Rd at Mink Hill Ln One Egress
121. Pine Rock Manor Assisted Living
122. Schoodac Road
123. Sky Island Apartments
124. Warner 103 Condominiums

### Economic Assets

125. A Warner Storage
126. Brayshaw Printing
127. Cyr Lumber Co & House Center
128. Knoxland Equipment
129. Madgtech
130. Market Basket
131. McDonalds
132. NH Park & Ride
133. NH State Liquor Store
134. Pelletier Associates, Inc.
135. Post Office
136. Premier Coach Company Charliebore Industries
137. School House Cafe
138. Sugar River Bank
139. Warner Fleamarket (Indoor)
140. Warner Laundrymat
141. Warner Power
142. B&M Maples (Maple Syrup)
143. Baker's Syrup (Maple Syrup)
144. Beaver Meadowbrook Farm Sugar House (Maple Syrup)
145. Blue Moon Berry Farm (Blueberries)
146. Coursier Farm (Produce, Cattle)
147. Curly Q Farm (Alpaca & Horse Farm) - For Sale
148. Dun Fooling Farm (Hay)
149. Double Clear Farm (Horse Boarding, Arena)

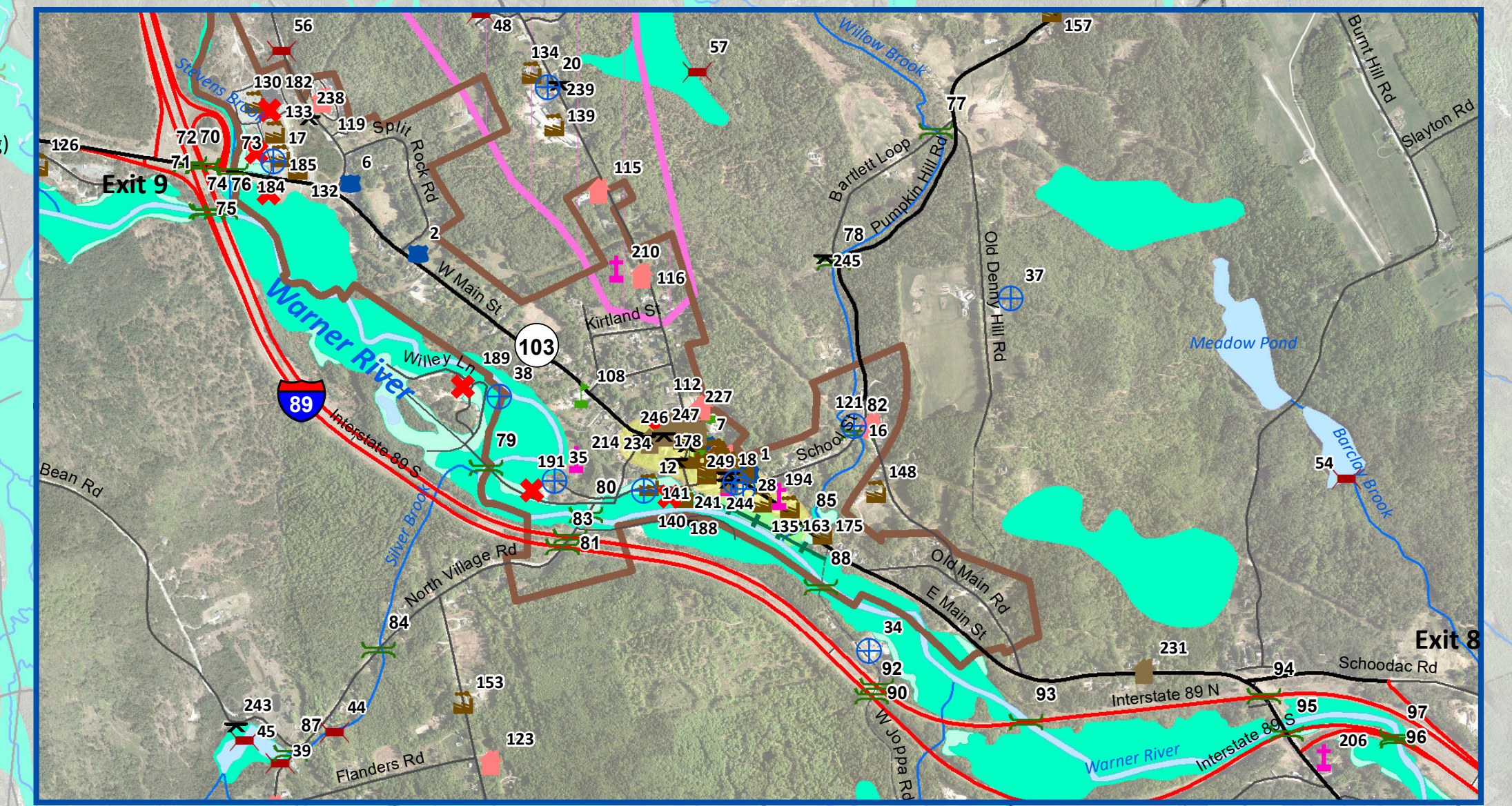
## COMMUNITY FACILITIES CONT.

### Economic Assets Cont.

150. Kearsarge Gore Farm (Organic Produce)
151. Kearsarge Meadows (Horse Boarding & Training)
152. Rhapsody Farm (Horse Boarding, Trail Riding)
153. No Acre Farm (Dairy, Livestock)
154. Rising Glory Lops (Rabbit Farm)
155. Rogers Maple Syrup (Maple Syrup)
156. The Vegetable Ranch (Organic Produce)
157. Twin Ridge Farm (Horse Training & Boarding)
158. Yankee Farmer's Market (Buffalo Farm)
159. New Farm (Donkey, Pony Farm)
160. Stoney Brook Farm (Seasonal Livestock)

### Main Street Village Area

161. Apartments Upper
162. Apartments West Side
163. Brookside Building (multiple)
164. Brown Family Realty
165. Charlie Mac's Pizza
166. Country Cowbys
167. Faith Minton Yoga
168. Foothills Country Store
169. Foothills Restaurant
170. Kearsarge Insurance
171. Main Attractions (Salon)
172. Main Street BookEnds
173. Schoodoc Coffee & Tea
174. Studio on Main
175. The Maples
176. The Local (Multiple)
177. Velvet Moose Winter Cream Shoppe
178. Warner Pharmacy
179. Warner Public Market
180. Warner Wags



Village Inset

### Hazardous Material Facility

181. Ajax Auto
182. Aubuchon Hardware
183. C&M Repair
184. Circle K Irving
185. Evans Fuel Mart Shell (Gas)
186. Harry's Garage
187. Heselton Junkyard
188. Kearsarge Heating Oils
189. Lockes Junkyard
190. Nicom Coatings Corp.
191. Rymes Propane

### Cemeteries and Churches

192. Northeast Catholic College Church
193. NH Telephone Museum Basement Church
194. United Church of Warner
195. Bartlett Family Cemetery
196. Bean Family Cemetery
197. Brown Family Cemetery
198. Coal Hearth Cemetery (81 lots)
199. Colby Cemetery (22 lots)
200. Davisville Cemetery (208 lots)
201. Ferrin Cemetery
202. Gore/Flanders Cemetery (45 lots)
203. Hoyt Cemetery (5 lots)
204. Johnson Family Cemetery (7 lots)
205. Kittredge Family Cemetery (11 lots)
206. Lower Warner Cemetery (97 lots)
207. Melvin Mills/Bagley Cemetery (47 lots)
208. Morse Cemetery (10 lots)
209. New Waterloo (1970) Cemetery (352 lots)
210. Old Warner Village Cemetery (194 lots)
211. Page Cemetery (45 lots)
212. Parade Ground Cemetery (127 lots)
213. Peaceful Retreat Cemetery
214. Pine Grove Cemetery
215. Pletcher Family Cemetery
216. Poor Farm Cemetery
217. Poverty Plains Cemetery
218. Pumpkin Hill Cemetery
219. Sanborn Cemetery
220. Schoodac Cemetery (242 lots)
221. Seavey Family Cemetery
222. Sisco Cemetery
223. Tory Hill/Pattee Cemetery
224. Waterloo Cemetery
225. Welchans Cemetery
226. Wheeler Family Cemetery

### Historic Sites and Buildings

227. Harris Lodge
228. Kearsarge Indian Museum
229. NH Telephone Museum
230. Old Fire Station
231. Old Meeting House
232. Old Odd Fellows Building
233. Warner Historic Society Building 1
234. Warner Historic Society Building 2

### Recreation and Gathering Sites

235. American Legion
236. Bagley Park
237. Fall Foliage Festival (Annual Event)
238. Kearsarge Performing Arts
239. Nature Discovery Center
240. Pleasant Lake Seasonal Campground
241. Riverside Park
242. Rollins State Park and Toll Booth
243. Silver Lake Swimming Area and Beach
244. Warner Fire Fighters Museum
245. Warner Fish and Game Club
246. Warner Historic Society Building 1
247. Warner Historic Society Building 2
248. Mount Kearsarge Indian Museum
249. NH Telephone Museum

