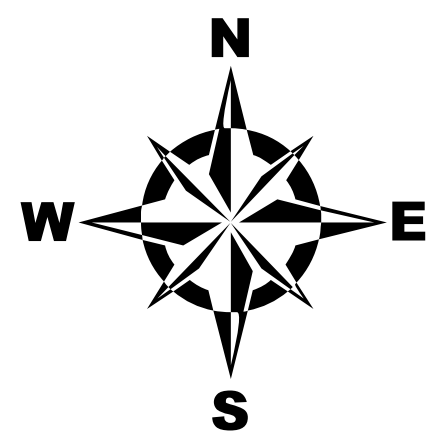


# TOWN OF WARNER NEW HAMPSHIRE Hazard Mitigation Plan 2024 Map 3: Critical and Community Facilities

## Legend

- Bridges
- Dams
- Kearsarge Mountain Rd Vulnerable Area
- Town Boundary
- Village Business Area
- Village Water District
- Critical Facilities**
- Cemeteries and Churches
- Economic Assets
- Essential Facilities
- Hazardous Materials Facilities
- Historic Sites and Buildings
- Main Street Village Area
- Recreational and Gathering Sites
- Shelters, Schools, and Medical Facilities
- Utilities
- Vulnerable Populations
- Floodplains**
- 1% Annual Flood Risk
- 0.2% Annual Flood Risk
- Floodway w/ Base Flood Elevation
- Water Features**
- Lakes and Ponds
- Rivers and Streams
- Intermittent Streams
- Roads**
- Interstates
- Class I and II State Highways
- Class V Town Maintained Roads
- Class VI Unmaintained Roads
- Other Roads/Private



0 0.5 1 2 3 Miles

This map was produced by the Central NH Regional Planning Commission for the Town of Warner Hazard Mitigation Plan Update, July 2024. It is intended for planning purposes only.

Funded through NH Homeland Security and Emergency Management and the Federal Emergency Management Agency.

Data Sources: NH GRANIT, NH Dept. of Environmental Services, NH Dept. of Transportation, FEMA, CNHRPC, Town of Warner, Hazard Mitigation Subcommittee Input, FEMA Preliminary 2023 Special Flood Hazard Areas.

Corrections should be provided to the Town of Warner and to CNHRPC.

Central New Hampshire  
Regional Planning  
Commission

28 Commercial Street, Suite 3  
Concord, NH 03301

603.226.6020  
www.cnhrpc.org



## CRITICAL FACILITIES

### Essential Facilities

1. Highway Department with Salt & Storage Shed
2. Inactive DOT Shed - 501 (diesel source)
3. NH DOT Shed - 526
4. Fire Station & EOC
5. Police Department
6. Town Hall
7. Transfer Station

### Utilities

8. Main Street/Village Area Hydrants
9. Dry Hydrant - Depot St/Warner River
10. Dry Hydrant - Mason Hill
11. Dry Hydrant - Melvin Mills/Warner River
12. Dry Hydrant - Newmarket Rd/Warner River
13. Dry Hydrant - Pleasant Pond
14. Dry Hydrant - Poverty Plains
15. Eversource Sub Stations
16. Fire Pond (seasonal)
17. Mt Kearsarge Fire Tower
18. Sewerage Pump Station
19. TDS Remote Station
20. TDS Remote Station
21. TDS Remote Station
22. TDS Remote Station
23. TDS Remote Station
24. TDS Remote Station
25. TDS Remote Station
26. TDS Remote Station
27. TDS Remote Station
28. TDS Telecom Central Office
29. Telecommunications Tower (Nickerson) - Route 103
30. Telecommunications Tower - Kelly Hill Rd
31. Telecommunications Tower - North Rd
32. Telecommunications Tower (MCT) - Kearsarge Mtn Rd
33. Warner Wastewater Treatment Plant
34. Water Pump Station
35. Water Storage Tank 1
36. Water Storage Tank 2
37. Well Heads (2)

### Bridges

38. 104/122 (State) Kearsarge Mtn Rd
39. 123/102 (Town) North Rd
40. 134/110 (Town) North Rd
41. 144/056 (State) NH 103
42. 145/053 (State) NH 103
43. 151/037 (Town) Laing Bridge Ln
44. 157/087 (Town) Waterloo Covered Bridge
45. 158/099 (State) NH 103
46. 159/075 (Town) Retreat Rd
47. 159/098 (Town) Old Town Line Rd
48. 160/022 (Town) Bible Hill Ln
49. 164/103 (State) I-89 SB
50. 164/104 (State) I-89 NB
51. 164/104 (State) I-89 NB Ramp
52. 165/106 (State) NH 103
53. 166/103 (State) I-89 SB
54. 166/103 (State) I-89 SB Ramp
55. 166/104 (State) I-89 NB

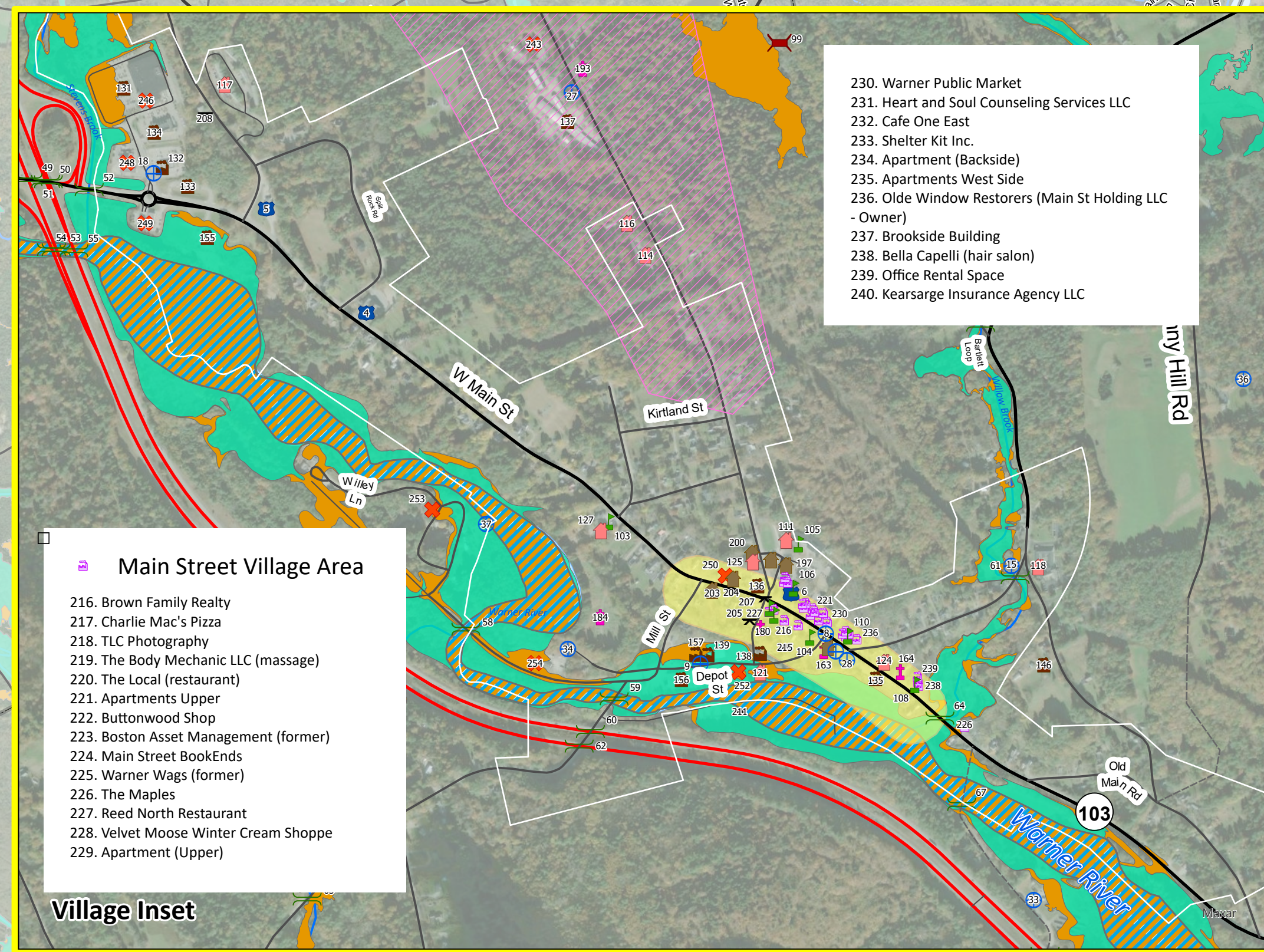
252. Kearsarge Heating Oils
253. Lockes Junkyard
254. Rymes Propane
255. Nicom Coatings Corp.
256. Warner Stone
257. Azmy Property
258. Tyler Lawn Care

### Hazardous Materials Facilities

241. Cyr Lumber Co & House Center
242. Knoxland Equipment
243. Pellettieri Associates, Inc.
244. Premier Coach Company Charlebois Industries
245. Ajax Auto
246. Aubuchon Hardware
247. C&M Repair
248. Circle K Irving
249. Evans Fuel Mart Shell (gas)
250. Harry's Garage (closed, potential Brownfield)
251. Heselton Junkyard

### Bridges Continued

56. 175/134 (Town) Bartlett Loop
57. 177/127 (Town) Bartlett Loop
58. 181/112 (Town) Chemical Ln
59. 183/114 (Town) North Village Rd
60. 184/113 (State) I-89 NB
61. 184/125 (Town) School St
62. 185/112 (State) I-89 SB
63. 187/104 (Town) North Village Rd
64. 187/122 (State) NH 103
65. 189/094 (Town) Mink Hill Ln
66. 189/099 (Town) North Village Rd (Town Redlist)
67. 191/122 (Town) Dalton/Ioppa Covered Bridge
68. 194/172 (Town) Connor's Mill Rd
69. 195/122 (State) I-89 NB
70. 195/166 (Town) Schoodac Rd
71. 196/121 (State) I-89 SB
72. 199/128 (State) I-89 NB
73. 202/136 (State) NH 103
74. 204/136 (State) NH 103 (State Redlist)
75. 206/141 (State) I-89 NB
76. 206/141 (State) I-89 NB Ramp
77. 216/159 (Town) Poverty Plains
78. 221/156 (State) I-89 NB
79. 222/156 (State) I-89 SB
80. 243/166 (State) I-89 SB
81. 244/167 (State) I-89 NB
82. 254/180 (State) NH 127 (State Redlist)
83. 255/163 (State) I-89 SB
84. 255/164 (State) I-89 SB



- ### Main Street Village Area
216. Brown Family Realty
  217. Charlie Mac's Pizza
  218. TLC Photography
  219. The Body Mechanic LLC (massage)
  220. The Local (restaurant)
  221. Apartments Upper
  222. Buttonwood Shop
  223. Boston Asset Management (former)
  224. Main Street Book Ends
  225. Warner Wags (former)
  226. The Maples
  227. Reed North Restaurant
  228. Velvet Moose Winter Cream Shoppe
  229. Apartment (Upper)

230. Warner Public Market
231. Heart and Soul Counseling Services LLC
232. Cafe One East
233. Shelter Kit Inc.
234. Apartment (Backside)
235. Apartments West Side
236. Olde Window Restorers (Main St Holding LLC - Owner)
237. Brookside Building
238. Bella Capelli (hair salon)
239. Office Rental Space
240. Kearsarge Insurance Agency LLC

- ### Dams
85. 243.04 Silver Pond Dam (Town) (L)
  86. 243.07 Swain Lowell Dam (Ladd)
  87. 243.15 Silver Brook Dam (Smith)
  88. 243.16 Silver Lake Upper Pond Dam (Town)
  89. 243.18 Farm Pond (Bridgewater)
  90. 243.19 Fire Pond Dam (Kumin)
  91. 243.20 Highlands Farm Pond Dam (Bartlett)
  92. 243.21 Fire Pond Dam (Cavellero)
  93. 243.23 Recreation Pond (Solomon)
  94. 243.24 Fire Pond Dam (Dickman)
  95. 243.25 Farm Pond Dam (Dickman)
  96. 243.26 Bear Pond Dam (Contoocook Village Precinct) (L)
  97. 243.27 Fire Pond Dam (Valey)
  98. 243.28 Farm Pond Dam (Kuno)
  99. 243.31 Burke Pond Dam (Burke)
  100. 243.32 Bower Stock Pond Dam (Bower)

- ### COMMUNITY FACILITIES
- #### Shelters, Schools, and Medical Facilities
101. Concord Hospital Family Medicine
  102. Magdalen College and KMR Town Shelter (campus for sale)
  103. Old Grade School Building
  104. Pillsbury Free Library (Cooling Center)
  105. Simonds Elementary School
  106. Town Hall (Town Shelter)
  107. BITS Therapeutic Equine Training Center
  108. Ted Austin Counseling Services
  109. Concord Hospital Physical Therapy Services
  110. Heart and Soul Counseling Services

- #### Vulnerable Populations
111. Boys & Girls Club (Simonds School) (~40 children)
  112. Braeside Apartments (~11 units)
  113. Davisville Apartments (~6 units)
  114. Kearsarge Apartments 103 (~12 units)
  115. Pleasant Lake Estates Manufactured Homes (~33 homes)
  116. Kearsarge Apartments 115 (~12 units)
  117. North Ridge (Kearsarge Elderly Housing Inc.) (~35 units)
  118. Colby Cemetery (22 lots)
  119. Blackstone Valley Housing (~8 units)
  120. Lutheran Latvian Homes (~45 homes)
  121. Depot Street Apartments (~9 units)
  122. 61 Hartshorn Lane Apartments (~4.5 units)
  123. 65 Hartshorn Lane Apartments (~6 units)
  124. Parker Apartments (~4 units)
  125. Village Apartments (~7 units)
  126. Pleasant Lake Seasonal Campground (~54 sites)
  127. Warner Early Learning Daycare (~9-12 children)

- #### Economic Assets
128. Brayshaw Painting
  129. A Warner Storage
  130. Madgtech
  131. Market Basket
  132. McDonald's
  133. NH Park & Ride
  134. NH State Liquor Store
  135. Post Office
  136. Sugar River Bank
  137. Kearsarge Business Centre (Indoor Fleamarket)
  138. Warner Laundromat
  139. Warner Power
  140. B&M Maples (Maple Syrup)
  141. Baker's Syrup (Maple Syrup)
  142. Beaver Meadowbrook Farm Sugar House (Maple Syrup)
  143. Blue Moon Berry Farm (Blueberries)
  144. Coursier Farm (Produce, Cattle)

- ### Recreational and Gathering Sites
205. American Legion
  206. Bagley Park with seasonal ice rink
  207. Fall Foliage Festival (Annual Event)
  208. Kearsarge Performing Arts
  209. Nature Discovery Center
  210. Pleasant Lake Beach and Public Boat Ramp
  211. Riverside Park
  212. Rollins State Park and Toll Booth
  213. Silver Lake Town Swimming Area and Beach
  214. Warner Fish and Game Club
  215. Jim Mitchell Park and Amphitheater

- ### Economic Assets Cont'd
145. Curly Q Farm (Alpaca & Horse Farm) (for sale)
  146. Dun Fooling Farm (Hay)
  147. Double Clear Farm (Horse Boarding, Arena)
  148. Kearsarge Gore Farm (Organic Produce)
  149. Kearsarge Meadows (Horse Boarding & Training)
  150. No Acre Farm (Dairy, Livestock)
  151. Rogers Maple Syrup (Maple Syrup)
  152. The Vegetable Ranch (Organic Produce)
  153. Twin Ridge Farm (Horse Training and Boarding)
  154. Yankee Farmer's Market (Buffalo Farm)
  155. DunKin'
  156. Mentis Sciences Aerospace
  157. Mentis Sciences Aerospace
  158. The Pampered Pooch Dog Grooming Salon
  159. Back in the Saddle (BITS) (Horse Boarding, Trail Riding, Arena)
  160. Fun With Ponies (Donkey and Pony Farm)
  161. Pumpkin Blossom Farm Lavender Farm

- ### Cemeteries and Churches
162. Magdalen Catholic College Church
  163. NH Telephone Museum Basement Church
  164. United Church of Warner
  165. Bartlett Family Cemetery
  166. Bean Family Cemetery
  167. Brown Family Cemetery
  168. Coal Hearth Cemetery (81 lots)
  169. Colby Cemetery (22 lots)
  170. Davisville Cemetery (208 lots)
  171. Ferrin Cemetery
  172. Gore/Flanders Cemetery (45 lots)
  173. Hoyt Cemetery (5 lots)
  174. Johnson Family Cemetery (7 lots)
  175. Kirtledge Family Cemetery (11 lots)
  176. Lower Warner Cemetery (97 lots)
  177. Melvin Mills/Bagley Cemetery (47 lots)
  178. Morse Cemetery (10 lots)
  179. New Waterloo (1970) Cemetery (352 lots)
  180. Old Warner Village Cemetery (194 lots)
  181. Page Cemetery (45 lots)
  182. Parade Ground Cemetery (127 lots)
  183. Peaceful Retreat Cemetery
  184. Pine Grove Cemetery
  185. Poor Farm Cemetery
  186. Poverty Plains Cemetery
  187. Pumpkin Hill Cemetery
  188. Pletcher Family Cemetery
  189. Sanborn Cemetery
  190. Schoodac Cemetery (242 lots)
  191. Seavey Family Cemetery
  192. Sisco Cemetery
  193. Tolly Hill/Pettee Cemetery
  194. Waterloo Cemetery
  195. Welchans Cemetery
  196. Wheeler Family Cemetery

- ### Historic Sites and Buildings
197. Main Street Warner Lodge, Inc (formerly Harris)
  198. NH Telephone Museum/Warner Firefighters Museum
  199. Kearsarge Indian Museum
  200. Old Fire Station
  201. Old Meeting House
  202. Old Odd Fellows Building
  203. Warner Historic Society Building 1
  204. Warner Historic Society Building 2